



***Lumens***<sup>®</sup>




Nureva Dual HDL300  
Settings Guide

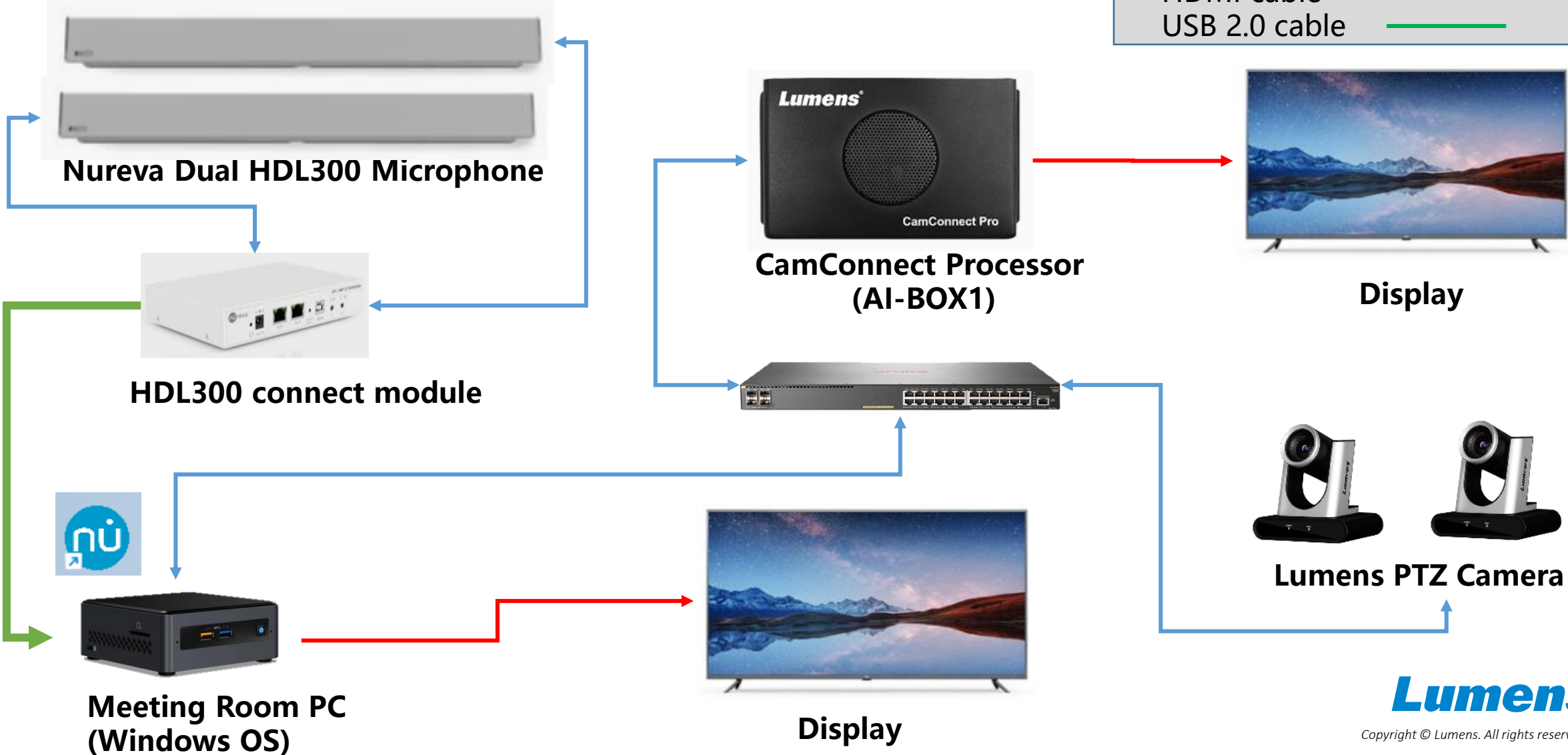
***Lumens***<sup>®</sup>

# Nureva Dual HDL300

## 1. Hardware Connections

# 1.1 Hardware Connections

| Cable define  |   |
|---------------|---|
| Cat5e         |  |
| HDMI cable    |  |
| USB 2.0 cable |  |



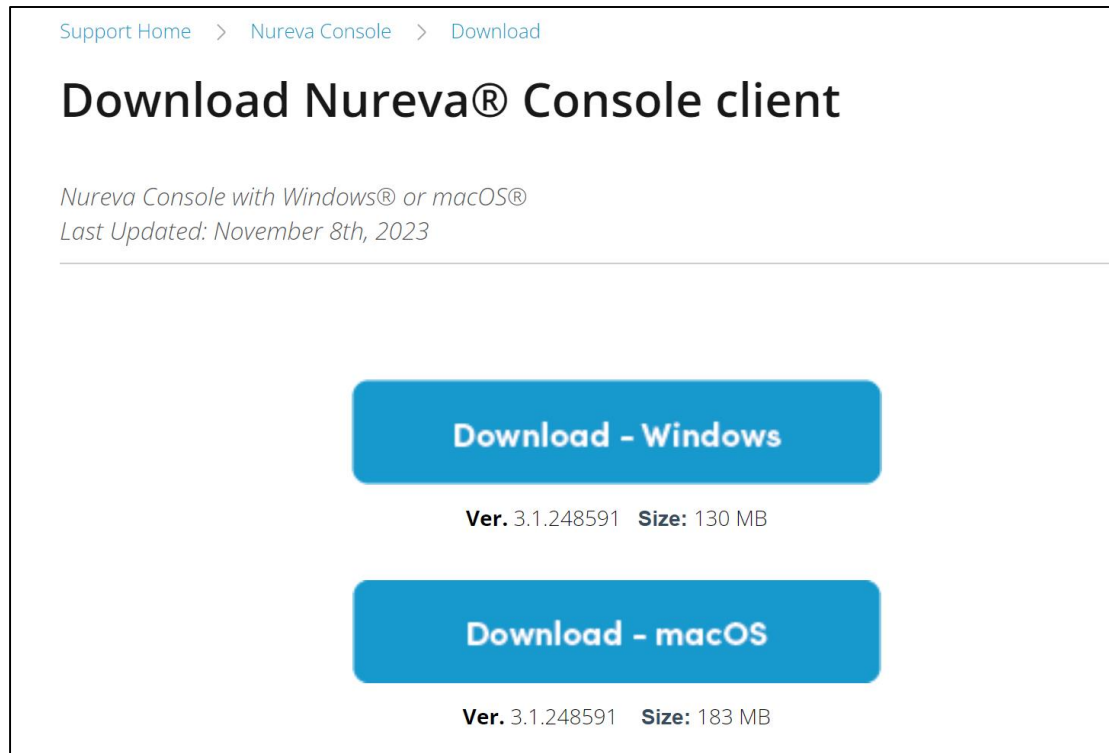
# Nureva Dual HDL300

## 2. Install Nureva Console client

# 2.1 Install Nureva Console client

## ■ Download [Console Client]

<https://support.nureva.com/97341-download/win-mac-download-nureva-console-client>



Support Home > Nureva Console > Download

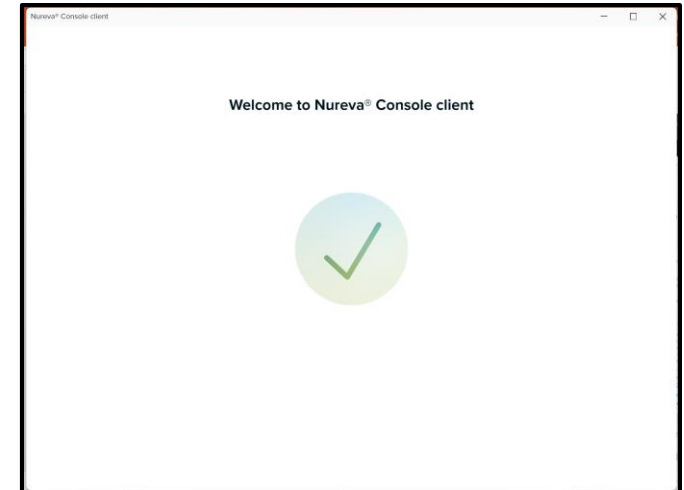
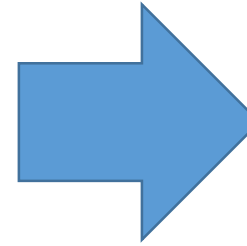
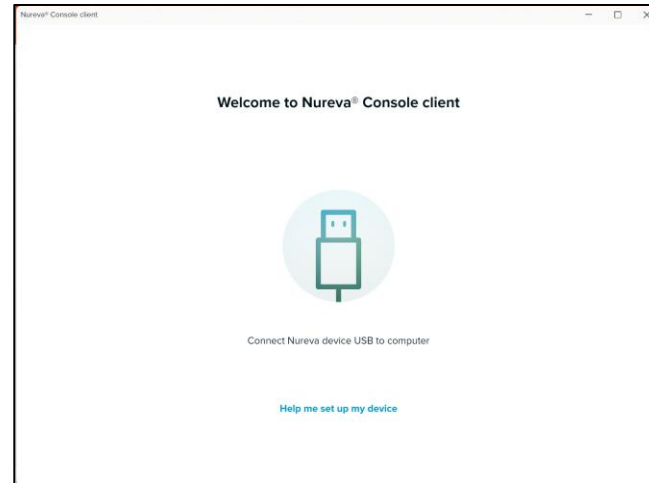
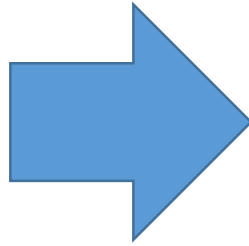
## Download Nureva® Console client

*Nureva Console with Windows® or macOS®*  
*Last Updated: November 8th, 2023*

**Download - Windows**  
Ver. 3.1.248591 Size: 130 MB

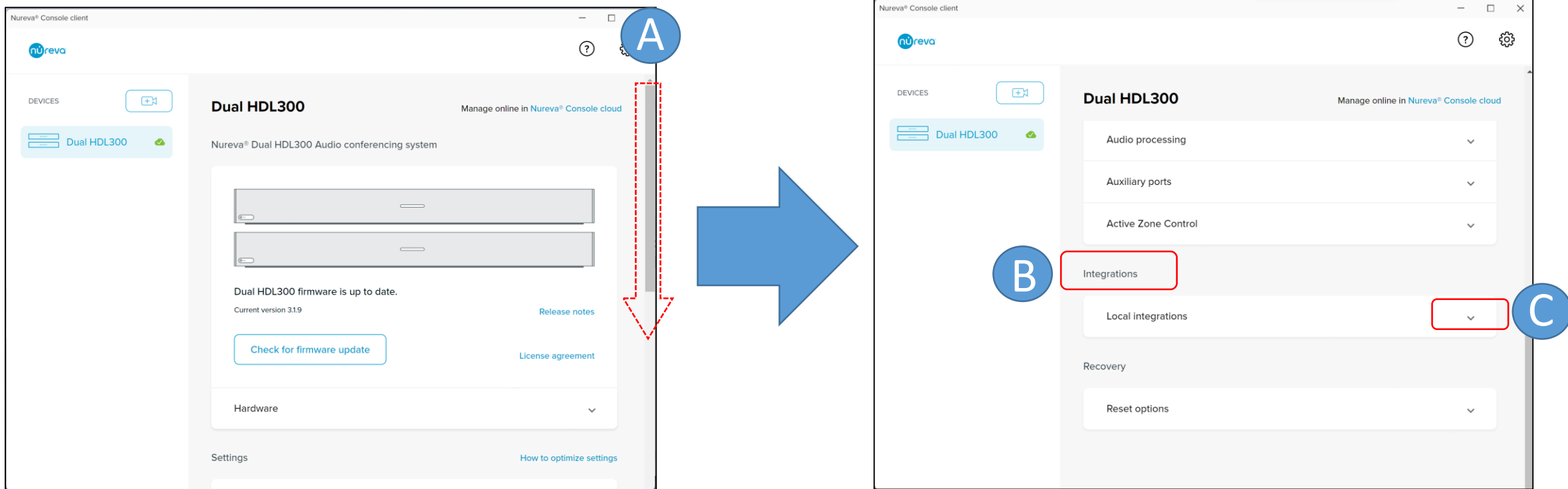
**Download - macOS**  
Ver. 3.1.248591 Size: 183 MB

## 2.2 Set up Nureva Console client



After Nureva Console client set up is completed, launch Console client app. Connect the Nureva connect module to the PC with a USB cable.

## 2.3 Set up Nureva Dual HDL300

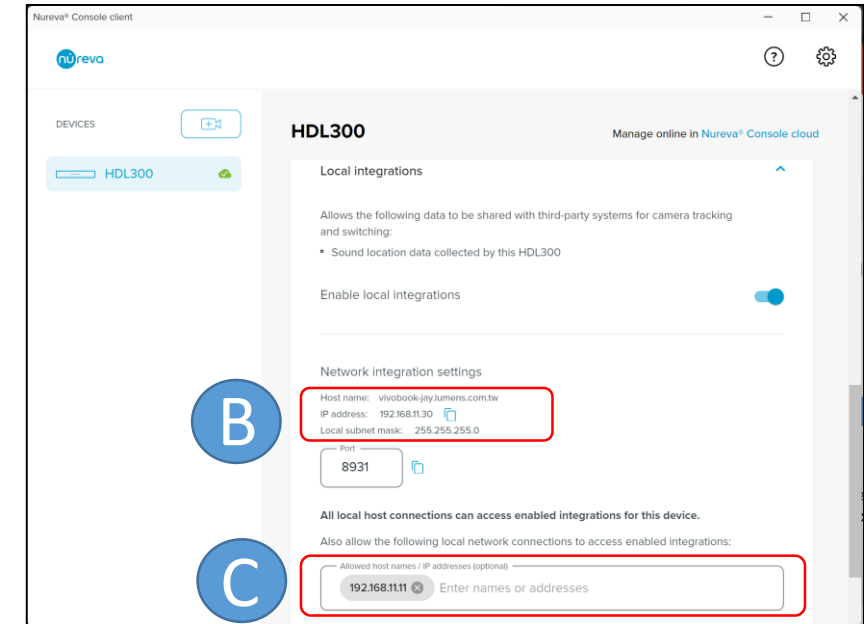
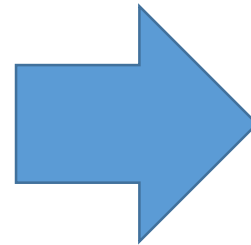
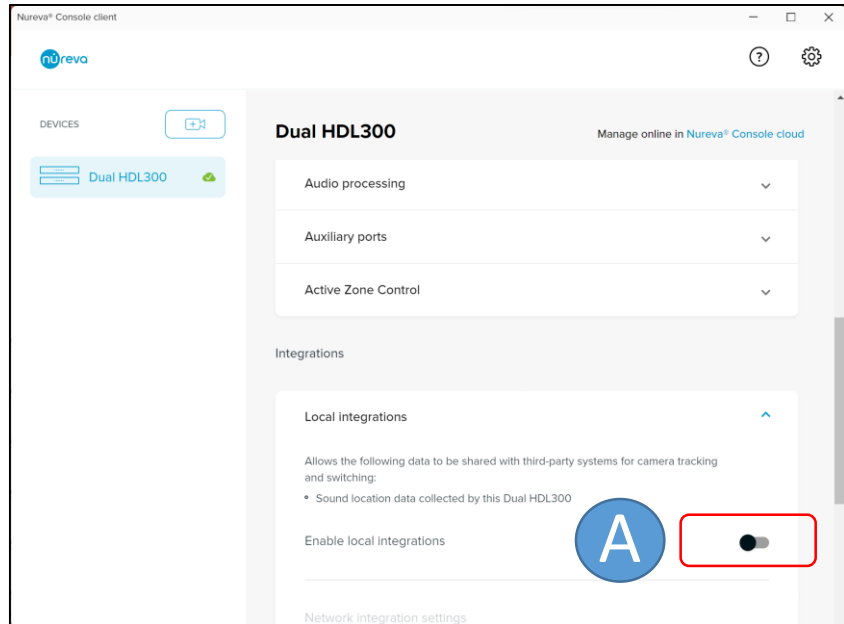


A: Pull the vertical scroll bar of the Console client down

B: Go to 'Integrations'

C: Expan [Local integrations] option

## 2.4 Set up camera tracking integration

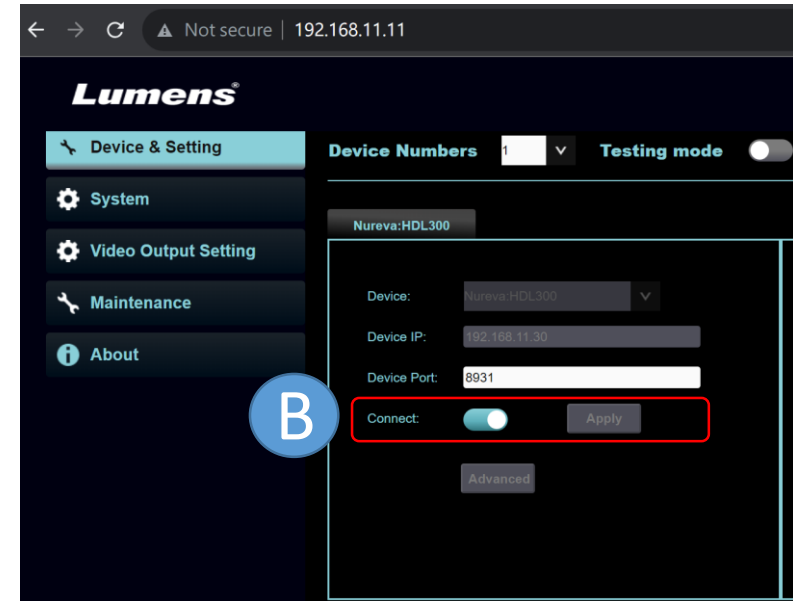
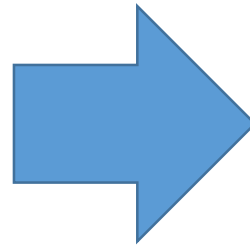
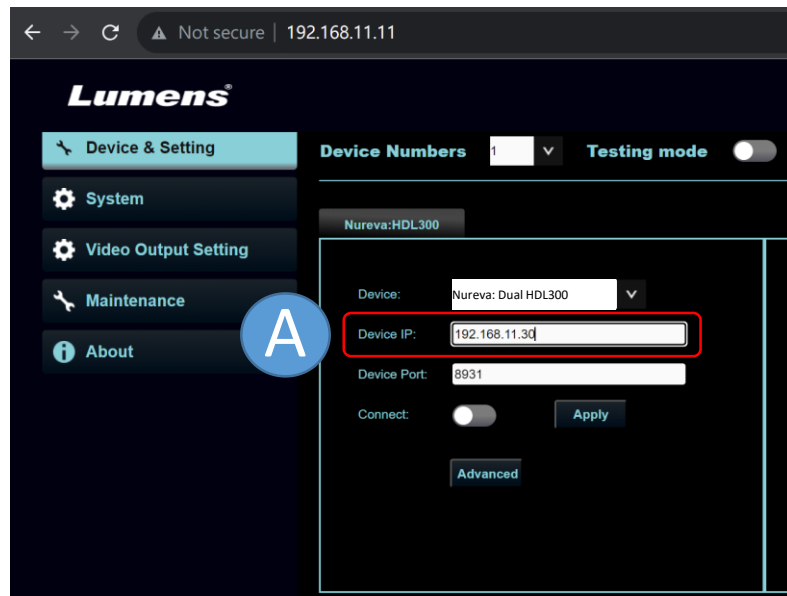


A: Enable [Network integration settings]

B: Copy the IP address



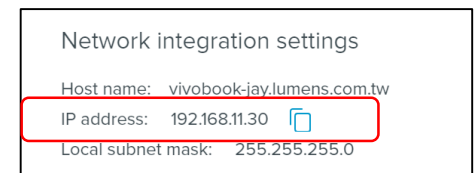
## 2.5 Set up camera tracking integration



A: Add this address to [Device IP] in the CamConnect Pro interface

B: Press [Apply] and the toggle [connect] bar to enabled

⚠️ Nureva's default port is 8931. Please confirm the port is permitted to connect with your PC.



# Nureva Dual HDL300

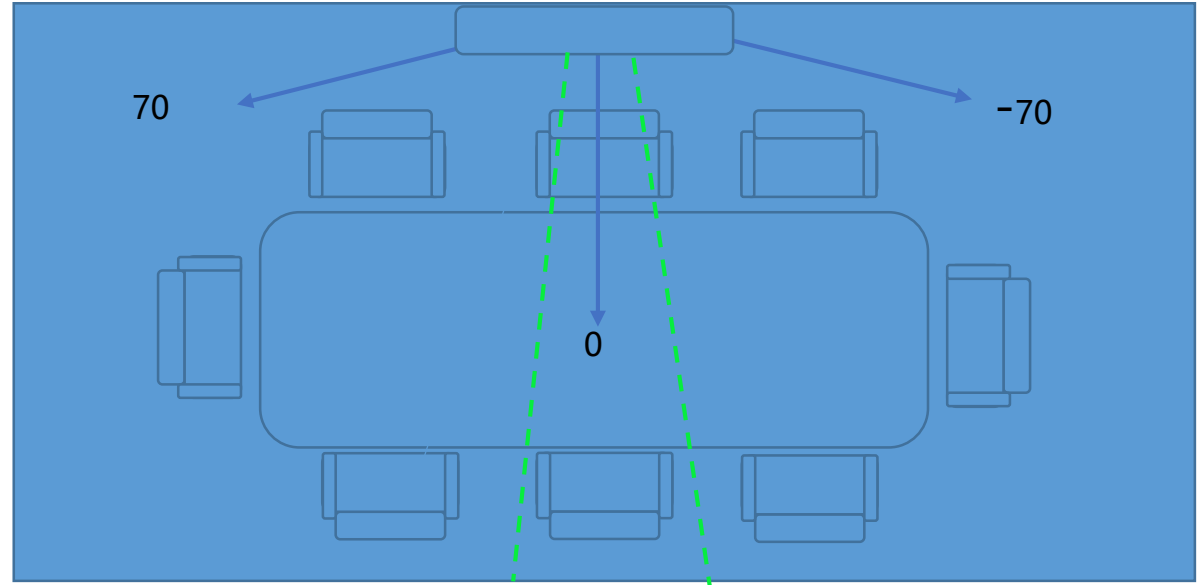
## 3. Set Angle Positions

# 3.1 Set Angle Positions

| Azimuth Angle                    |     |       | Camera | Preset No. |   |   |
|----------------------------------|-----|-------|--------|------------|---|---|
| <input type="radio"/>            | -70 | ~ -53 | Off    | ▼          | 1 | ▼ |
| <input type="radio"/>            | -53 | ~ -35 | Off    | ▼          | 2 | ▼ |
| <input type="radio"/>            | -35 | ~ -18 | Off    | ▼          | 3 | ▼ |
| <input type="radio"/>            | -18 | ~ 0   | Off    | ▼          | 4 | ▼ |
| <input checked="" type="radio"/> | 0   | ~ 17  | Off    | ▼          | 5 | ▼ |
| <input type="radio"/>            | 17  | ~ 35  | Off    | ▼          | 6 | ▼ |
| <input type="radio"/>            | 35  | ~ 52  | Off    | ▼          | 7 | ▼ |
| <input type="radio"/>            | 52  | ~ 70  | Off    | ▼          | 8 | ▼ |

Apply

Mic. Azimuth Angle: 0



Note: “Azimuth Angle” maximum angle range is -70 to +70 degrees  
0-degree is the center point.

The diagram above shows a sound source detected in the 0-degree region.